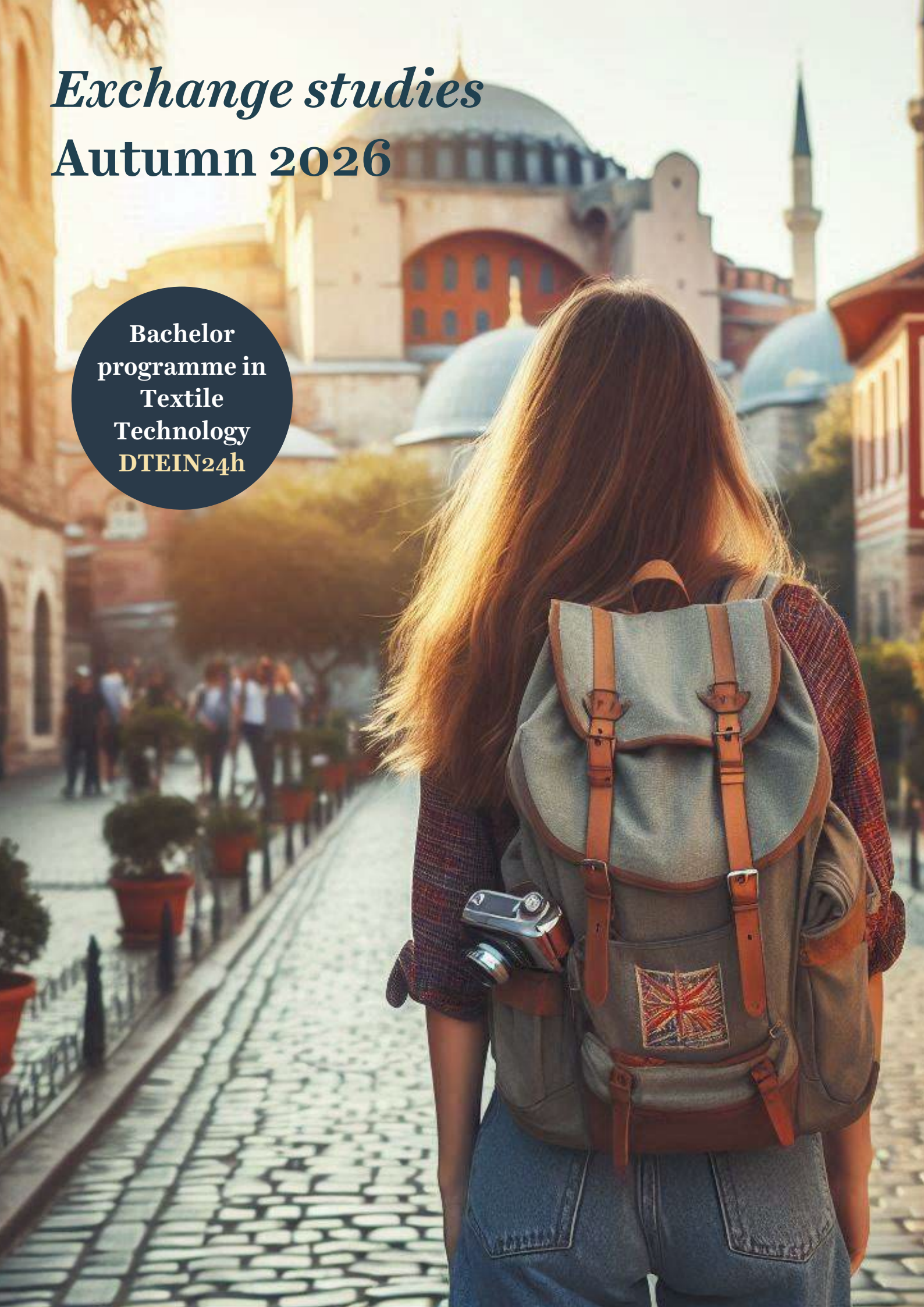


# *Exchange studies* Autumn 2026

Bachelor  
programme in  
Textile  
Technology  
DTEIN24h



## Introduction

In this document, you will find information about relevant study destinations, carefully selected according to your study programme. Please, bear in mind information and course offerings might change and that it is your Assistant Head of Department who decides whether courses can be credited or not

In terms of available placements, this number represents the total number of sending students per academic year and might include other study programmes besides your own.

Partner universities will be presented in following order:

### Erasmus+ agreements

- Lithuania, Kaunas University of Technology
- Germany, RWTH Aachen University
- Netherlands, Saxion University of Applied Science

### Bilateral agreements

- Hong Kong, Hong Kong Polytechnic University

Further information on exchange studies can be found on our website,  
[www.hb.se/utbytesstudier](http://www.hb.se/utbytesstudier)

In case of questions, feel welcome to contact the International Office at [exchange@hb.se](mailto:exchange@hb.se)

Happy reading!

Camilla Carlsson, International Coordinator  
[camilla.carlsson@hb.se](mailto:camilla.carlsson@hb.se)





Partner universities  
*within EU/EAA.*

*Erasmus+ is an EU  
programme that enables  
higher education students  
to study at other European  
universities with a grant.*

## Lithuania

### Kaunas University of Technology (KTU)

*“Kaunas University of Technology (KTU) is a technical university founded in 1922 and was originally famous for the ultrasound and vibrotechnics laboratories, and scientific research of textiles. Today KTU consists of 9 faculties, 8 institutes and 9 research centers. In addition the university has 23 student organizations, art groups and sports facilities on campus. KTU offers an international campus with around 15% international students and several educational programs in English.”*

Kaunas is a longtime partner of the university of Borås but has just recently made more courses in textile technology available in English and thus enabling student exchanges. Students from the Textile Engineering may choose courses from the *Fashion Engineering programme*, semester 5 or 7 or put together an own choice of courses from course list.

#### Number of placements

2 students per academic year, more places can be made available.

#### Academic Calendar

- Autumn semester: September – January

#### Useful Links

[University Webpage](#)

[University Webpage for exchange students](#)

[Fashion Engineering](#)

## Germany

### RWTH Aachen University

*“RWTH Aachen University is a place where the future of our industrialized world is thought out. The University is proving to be a hotspot with increasing recognition where the innovative answers to global challenges are developed.*

*Visible evidence of this is the RWTH Aachen Campus that is being developed in close cooperation with industry and which is to form one of the largest research parks in Europe. Students and employees of RWTH Aachen will benefit equally from these developments and are expressly invited to get involved in shaping the individual initiatives.”<sup>3</sup>*

Previous exchange students from Borås studying Textile Engineering have taken part in a research based Project Work at Institut für Textiltechnik. Students are incorporated into a research project where they are given a project of their own but are also part of the project team. They will be asked to do smaller tasks and research within the research project together with other students at bachelor, master and PhD level. The Project Work will correspond to 30 ECTS with a combination of practical work and a written report, similar to a thesis project.

### Number of placements

2 students per academic year. All placements are dedicated to DTEIN.

### Academic Calendar

- Autumn semester: September – January (individual study period for Borås students)

### Useful Links

[University Webpage](#)

[University Webpage for Incoming Students](#)

[Research Paper and Theses](#) (current projects taking place at Aachen)

---

<sup>3</sup> RWTH Aachen Website [Accessed 21 January 2021]



## Netherlands

### Saxion University of Applied Science

*“Saxion University of Applied Sciences is one of the largest institutions of higher education in the Netherlands, with close to 27,000 students (and still growing!).”*

Saxion University of Applied Sciences is located in the city *Enschede*.

*“Enschede is a medium-sized town near the German border, situated in the east of the Netherlands in the province of Overijssel. Enschede has approximately 160,000 inhabitants. It is the biggest city in a region called Twente. Though there is little left of the textile industry now, some of the factories and the houses of wealthy textile barons can still be found throughout the city as monuments.*

*Germany is within a stone’s throw from the city: Enschede is about 60kms from Munster in Germany, 150kms from Amsterdam, and 195 kms from Rotterdam. Every half hour a train leaves for Utrecht, Amsterdam and Rotterdam.”<sup>1</sup>*

The Swedish School of Textiles and Saxion University has a long history of academic cooperation within both research and student exchanges.

Textile engineering students can enroll in a 30 ECTS project work connected to ongoing research project within Sustainable & Functional Textiles. Students will be given a workplace together with other students and staff working on different research projects and students are expected to spend the majority of their time on campus.

### Number of places

6 students in total of which 2 places are dedicated to for DTEIN per academic year.

### Academic Calendar

- Semester 1: Aug/Sep – Jan/Feb

### Useful Links

[University Webpage](#)

[Research within Sustainable & Functional Textiles](#)

[Projects - Functional Textiles](#)

[Projects – Sustainable Textiles](#)

---

<sup>1</sup> Saxion website [Accessed October 2019]



Partner university  
*outside of EU/EAA*





## Hong Kong

### Hong Kong Polytechnic University

*“PolyU was first established in 1937 as the Government Trade School and assumed full university status in 1994. The student population at PolyU is the largest among all publicly funded universities in Hong Kong. PolyU ranked 91st in the QS World University Rankings 2019/20.4*

Exchange students are guaranteed accommodation at the PolyU Student Halls of Residence for a twin-sharing room, no single rooms are available. Exchange students are required to have a visa, however, Hong Kong Polytechnic University handles the process as part of the students' application.

Exchange students from Borås enrol at *the School of Fashion and Textiles* (previously called Institute of Textiles and Clothing). Courses are usually chosen close to the start of the semester.

One academic semester of full time studies correspond to 15 Hong Kong credits.

#### **Examples of courses previous students have studied are:**

- *AI in Fashion Design (3 credits)*
- *Fashion Consumer Behaviour (3 credits)*
- *Fashion Design (3 credits)*
- *Fashion Marketing (3 credits)*
- *3D Scan, Design and Print in Fashion Design (3 credits)*
- *Textiles for Intimate Apparel and Active wear (3 credits)*
- *Fashion Entrepreneurship Management (3 credits)*
- *Design Studies (3 credits)*
- *Digital Marketing (3 credits)*
- *Smart Textiles and Wearable Applications (3 credits)*

#### **Number of placements**

1 place is reserved for DTEIN and 1 place is shared with other programmes.

#### **Academic Calendar**

Autumn semester: September – December

#### **Useful Links**

[University Webpage](#)

[University Webpage for Incoming Students](#)

[Course Catalogue](#)